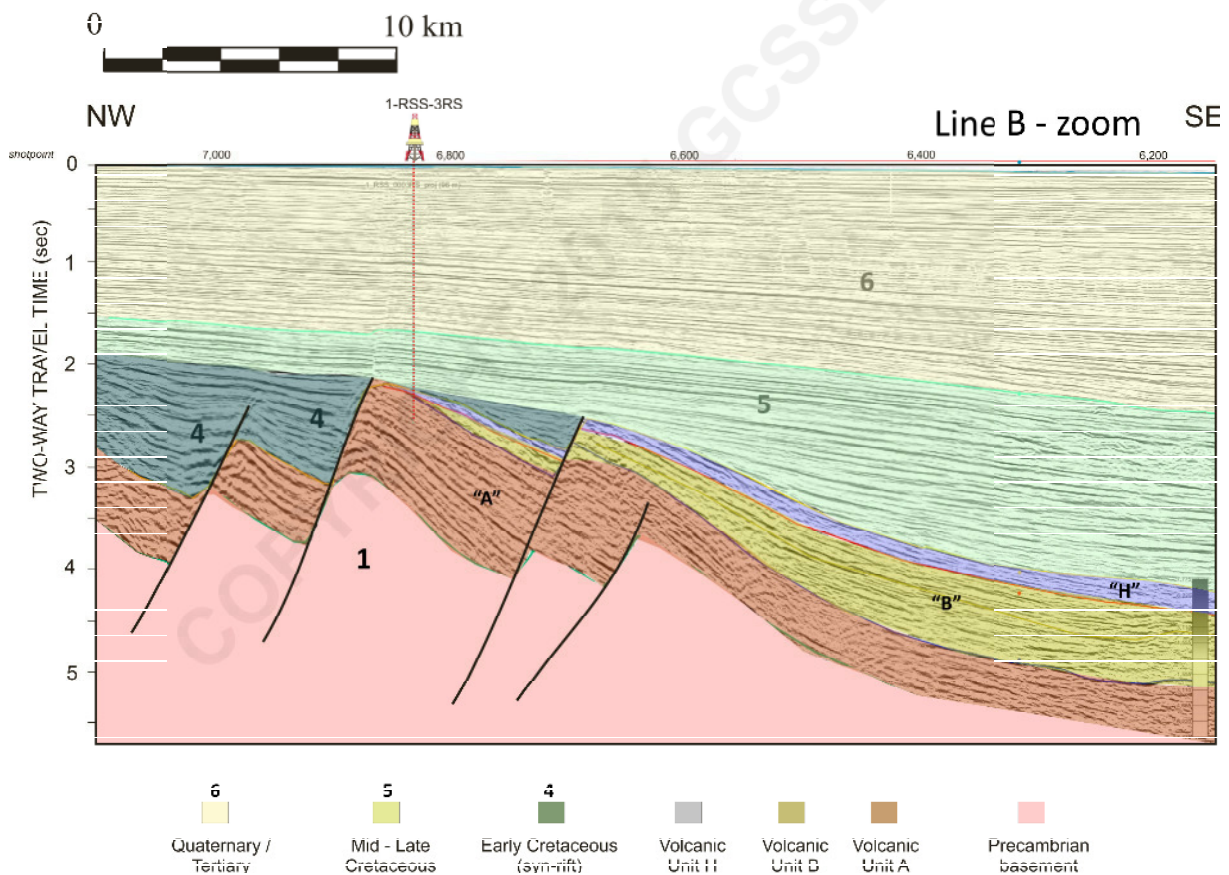
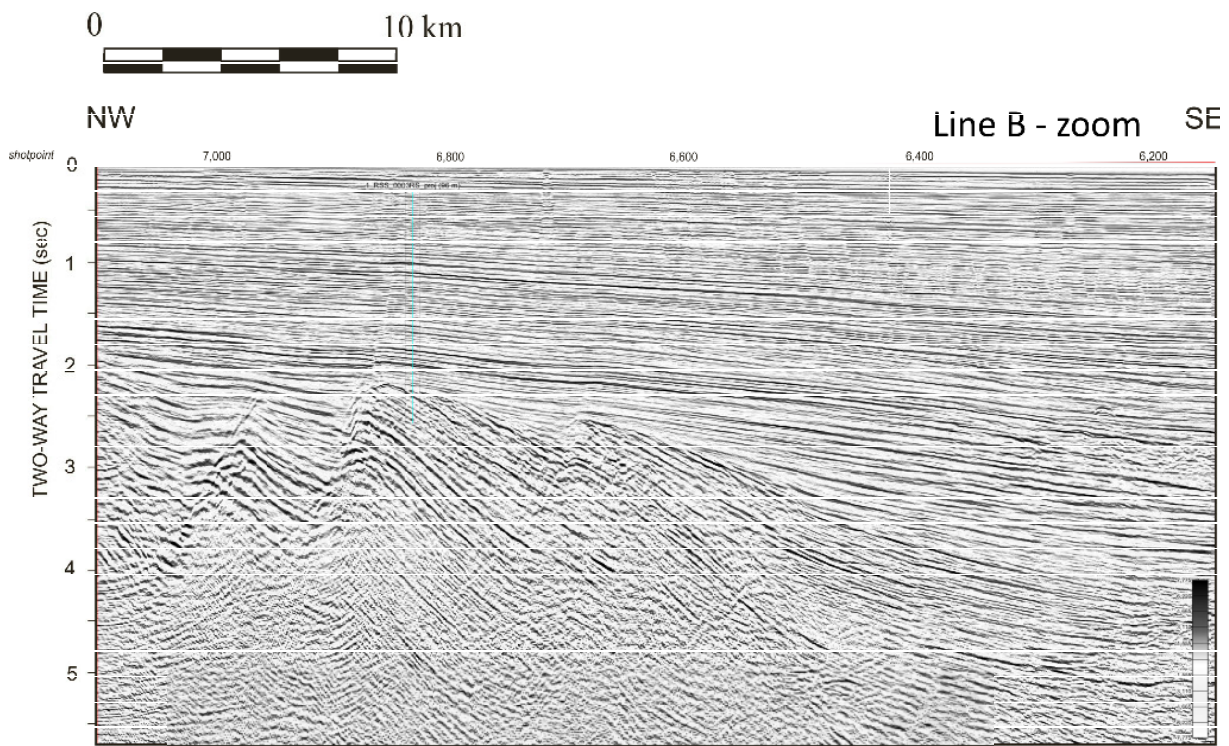


Figure 7. Seismic profile in the central Pelotas Basin (Line B, see location in Fig. 2). Seismic example without (top) and with (bottom) interpretation. Units references the same as Figure 6, Unit 2 in this case represents the isostatic Moho.



**Figure 8. Detail of the seismic example Line B (see location in Fig. 2). Seismic example without (top) and with (bottom) interpretation. Units references are the same as Figure 6. The well 1-RSS-3RS is projected.**